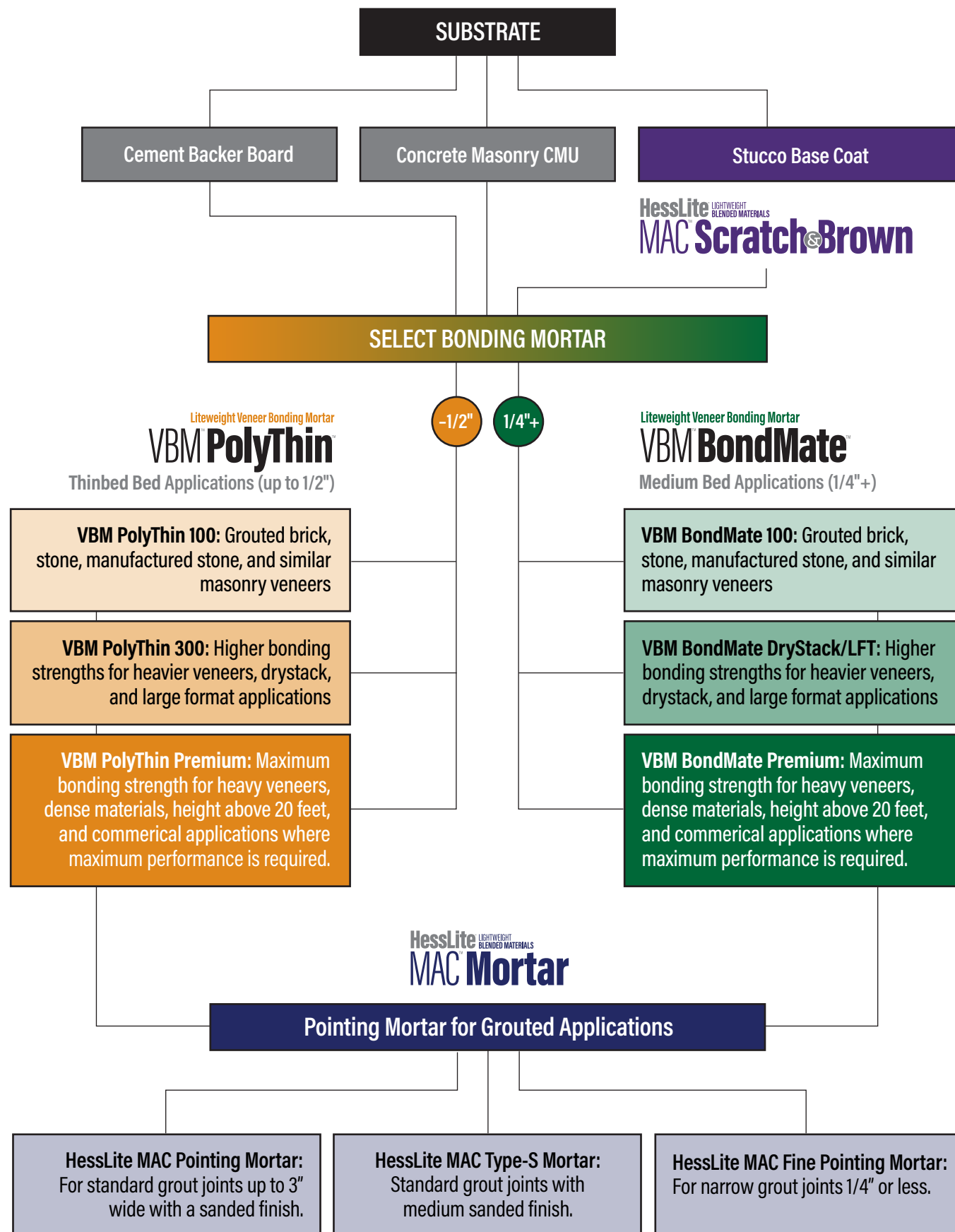


HessLite Product Selection Guide



HessLite™

LIGHTWEIGHT BLENDED MATERIALS

The HessLite line of bonding mortar products was developed to meet the diverse and demanding needs of today's professional. Our mortars are structured around the utility of lightweight aggregates, performance-modified with proven MAC™ and VBM™ chemistry, and designed to be application-specific—meeting the nuanced needs of the ever-growing variety of manufactured stone, brick and board-like veneer products.

HessLite bonding mortars represent a unique combination of proven performance and welcome safety benefits for masonry crews. The bags of lightweight material are easier to safely move, lift onto the mixer deck, and work with day after long day. No respirable crystalline silica means no worries about long-term health issues working around mortar dust on the jobsite.

Lock-down performance. Expert support. Consistent quality. Safer to use. The perfect bag of mortar for hard-working masonry pros and their support crews.

THE HESSLITE INSTALLATION SYSTEM

Thinbed Bonding Mortars: VBM® PolyThin™ 100, 300, Premium

Medium Bed Bonding Mortars: VBM® BondMate™ 100, DryStack/LFT, 500

Construction Mortars: HessLite® MAC® Mortars Type-S, IWR, Type-N, Pointing Mortar, Fine Pointing Mortar

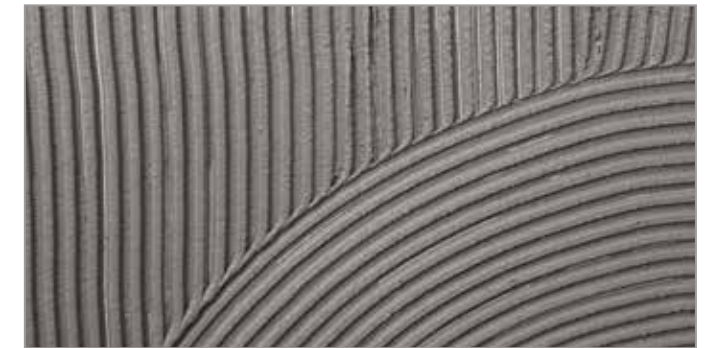
Base Plaster: HessLite® MAC® Scratch & Brown, Scratch & Brown IWR, and Scratch & Brown Poly



Contact **Hess Performance Products** for stocking dealers and technical support services.

Product Availability—208.860.7325 or lee@hesslite.com

Technical Support—208.860.7325 or lee@hesslite.com



Liteweight Veneer Bonding Mortar

VBM PolyThin 100

 | for THINBED Bonding (LESS than 1/2") • Level 1 Performance • ANSI 118.4

VBM PolyThin 100 is a polymer modified, lightweight, THINBED bonding mortar for traditional grouted applications over smooth, even substrates. Combination of high bond strength, excellent non-sag, and water resistance/efflorescence control properties not found in most mortars. Great combination of high performance and economy. Includes anti-microbial additives. For interior or exterior applications. Meets ANSI 118.4 shear bond (tile).

USES: Designed for bonding manufactured stone, natural stone veneers, thin brick, precast concrete, ceramic tiles, certain glass tiles, and similar veneers or pavers (pedestrian traffic) requiring a thin mortar bed.

Liteweight Veneer Bonding Mortar

VBM PolyThin 300

 | THINBED Bonding (LESS than 1/2") • Level 2 Performance • ANSI 118.4

VBM PolyThin 300 is a polymer modified, light-weight, THINBED bonding mortar over smooth, even substrates (cement backer board, finished concrete, gypsum board, flush-joint CMUs). Provides enhanced bonding, non-sag, and water repellency performance. Interior or exterior applications. Meets ANSI 118.4 shear bond (tile) specifications.

USES: Applications include drystack-type masonry units with limited or no grout joint, cast board forms, pavers (pedestrian traffic), large format tile, and panelized units of manufactured stone or brick.



Liteweight Veneer Bonding Mortar

VBM PolyThin PREMIUM

 | THINBED Bonding (LESS than 1/2") • Level 3 Performance • ANSI 118.15

VBM PolyThin Premium is a lightweight, polymer modified THINBED bonding mortar over smooth, even substrates. Features advanced bonding, water repellency, and non-sag performance for the most demanding installations. Includes anti-microbial additives. For interior or exterior applications. Meets specifications of ANSI 118.15 shear bond (tile).

USES: Advanced bonding applications include drystack installations that have limited or no grout joint, stone, brick, and thicker natural stone veneers, large-format profiles, heavy veneers, and dense, closed-surface materials.

Liteweight Veneer Bonding Mortar

VBM BondMate 100

 | for MEDIUM BED Bonding (1/4"+) • Level 1 Performance • ANSI 118.4

VBM BondMate 100 is a polymer modified, lightweight medium bed bonding mortar that represents a great combination of high performance and economy, featuring high bond strength, non-sag, and efflorescence resistance. Suitable for interior or exterior applications over rough or uneven substrates. Includes antimicrobial additives. Bond strength typically greater than the substrate. Meets ANSI 118.4 shear bond requirements.

USES: Designed specifically for installation of grouted masonry veneer and tile—including natural stone^[1], manufactured stone, thin brick, precast concrete, ceramic tile and pavers^[2] (pedestrian traffic).

Liteweight Veneer Bonding Mortar

VBM BondMate DRY-STACK/LFT

 | MEDIUM BED Bonding (1/4"+) • Level 2 Performance • ANSI 118.4

VBM BondMate DryStack/LFT is a polymer modified, lightweight medium bed bonding mortar for use over rough or uneven substrates. DryStack/LFT is workhorse of our polymer-modified medium bed bonding mortar line, featuring extra tack, water retention, water repellency, and efflorescence protection. Suitable for interior or exterior applications. Includes antimicrobial additives. Meets ANSI 118.4 shear bond requirements.

USES: Designed for adhering Large Format Tile (LFT), stone and drystack installations that have limited or no grout joint. Also use to adhere cast board forms, pavers (pedestrian traffic), and panelized units of manufactured stone or brick.

Liteweight Veneer Bonding Mortar

VBM BondMate PREMIUM

 | MEDIUM BED Bonding (1/4"+) • Level 3 Performance • ANSI 118.15

VBM BondMate Premium is a polymer modified, lightweight bonding mortar for challenging applications requiring a medium mortar bed. Contains our highest polymer modification for exceptional flexural bond and water repellency. Provides advanced bonding for large and heavy veneers. Interior or exterior applications. Includes anti-microbial additives. Meets ANSI 118.15 shear bond requirements.

USES: Designed specifically for difficult bonding applications of manufactured stone, natural stone^[1], thin brick, precast concrete, concrete pavers, certain tile or similar masonry veneers and pavers. Recommended for the most demanding projects, like heavy veneers, horizontal paver applications, or paver installation with vehicle traffic.



HessLite MAC Mortar

Performance Types: S - IWR - N
Property Specification: ASTM C270

HessLite MAC Mortars contain a blend of Portland cement, graded lightweight aggregate, hydrated lime, and proprietary additives—ideal complimentary performance mortars for lightweight masonry products.

HessLite MAC Mortar Type-S is a high-strength masonry mortar with excellent workability, low shrinkage, and moderate efflorescence control.

HessLite MAC Mortar IWR is formulated with additional water repellent and efflorescence reducing additives.

HessLite MAC Mortar Type-N is for non-structural construction or repair of block, brick, stone.

USES: Designed for installing block, brick, stone, pavers^[2] (pedestrian or light vehicle traffic), and similar masonry units.



HessLite MAC Mortar POINTING

Performance Types: Pointing • Fine Pointing
Property Specification: ASTM C270

HessLite MAC Pointing Mortars were developed specifically for grouting applications. They have excellent flow through a grout bag, provide great bond strengths, low shrinkage, and excellent workability. They also include efflorescence reducing additives.

HessLite MAC Pointing Mortar is a lightweight pointing mortar for grouting applications with joints GREATER than 3/8".

HessLite MAC Fine Pointing Mortar is an extra-lightweight, fine-aggregate pointing mortar for grouting applications with joints LESS than 1/2".

USES: For grouting natural stone, manufactured stone, and thin-brick veneers. HessLite MAC Pointing Mortars can also be used to repair and repoint grout joints in block and brick. Available in a variety of colors to meet individual job requirements.

HessLite MAC Scratch & Brown

Performance Types: Standard • IWR • Poly
Property Specifications: ASTM C926 • C1063

HessLite MAC Scratch & Brown products are fiber reinforced lightweight cement plasters designed for strength, efflorescence control and water resistance while providing low shrinkage, excellent workability, strength, and product consistency. Lightweight properties significantly improve freeze-thaw resistance, handling, and application. The recommended base for VBM Bonding Mortars—superior to typical plastic cement jobsite mixes.

HessLite MAC Scratch & Brown is the premium base-standard product.

HessLite MAC Scratch & Brown IWR contains additional integral water repellent and efflorescence reducing additives.

HessLite MAC Scratch & Brown Poly is modified with additional polymer for increased flexural strength and water repellents for added durability and freeze-thaw protection.

USES: Use HessLite MAC Scratch & Brown plasters as the first coat (scratch) and the second coat (brown) for all types of lath and plaster applications including decorative stucco wall systems, mortar beds for shower walls, and other veneer and tile applications.



VBM and MAC are trademarks of r-crete inc.

[1] • For laying up natural stone, brick, and CMUs, we recommend using **HessLite Type-S Mortar**.

[2] • For bonding pavers with vehicle traffic (and other difficult bonding applications), use **VBM BondMate Premium**.

Go to [hesslite.com](https://www.hesslite.com) for mixing and application instructions, product data sheets, and more.